

WORKSUN

Solar street lighting with variable, technical possibilities

Applications:

The WORKSUN is a flexible Solar LED light for outdoor use. The outdoor light is working with the energy from the solar panel without connection to the mains supply. Based on the modular concept the WORKSUN could quick and simple assembled and dismantled with the use of a ground screw.

The high efficient LED light will fit the DIN EN 13201. Typical usages are building sites, container buildings, car parks, driveways, open-air events, etc.

Function:

The integrated battery is charged during the day. In the twilight the LED light is activated automatically.

Set included:

- Solar module
- LED head with control panel
- Integrated battery
- Pole

Optional

- Special floor screwing plug for the reliable and fast assembly on defined underground



Technical data

Photovoltaic module	
Module	polycrystalline silicon cells
Performance module	70W
Measurements module	785mmx676mmx38mm
Efficiency	16%

Battery	
Battery	3x 12V 15Ah
Battery life	approx. 3 - 4 years (depends on temperature)
Operating temperature	-15°C to +40°C

LED light head	
LED max. output	8x2W
LED max. light flux	1600lm
Typical light flux	from 410lm to 800lm
Autonomous time with full battery max.	90h
Colour temperature	6,500K
Measurements light head	488mmx84,5mmx96mm
LED life	> 50,000h
Protection class	IP65
Miscellaneous	Insect-neutral light

Measurements	
Total height by ground level	4.650mm
Light spot height by ground level	3.800mm
Total length pole	5.000mm
Length pole mounted in the ground	750mm
Material pole	galvanized steel

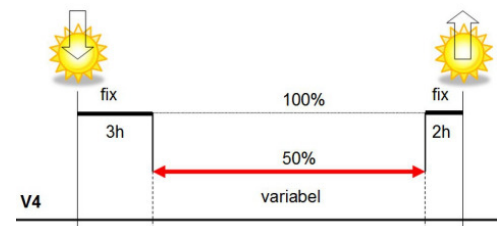
Dimensions and weight for transport (single dispatch)	
Light head in box - Dimensions - Weight	160mmx600mmx120mm 1,5kg
Battery - Dimensions - Weight	1.200mmx180mmx190mm 17kg
Module - Dimensions - Weight	720mmx820mmx240mm 7kg



Energy- and time-management:

V	Function	Light output	Time
1.	Dimming	50%	24:00-5:00
2.	Switching off	0%	24:00-5:00
3.	Continuous illumination* (with energy-management)	100%	Shines all night
4.	energy optimized	--	see illustration

*We recommend the continuous illumination of the WORKSUN only in countries where an extreme amount of sun shines in.



Pole in round box - Length - Diameter - Weight	5.100mm 110mm 35kg
Krinner screw foundation in box - Length - Diameter - Weight	1.650mm 150mm 8,5kg

Maintenance cycles / Warranty

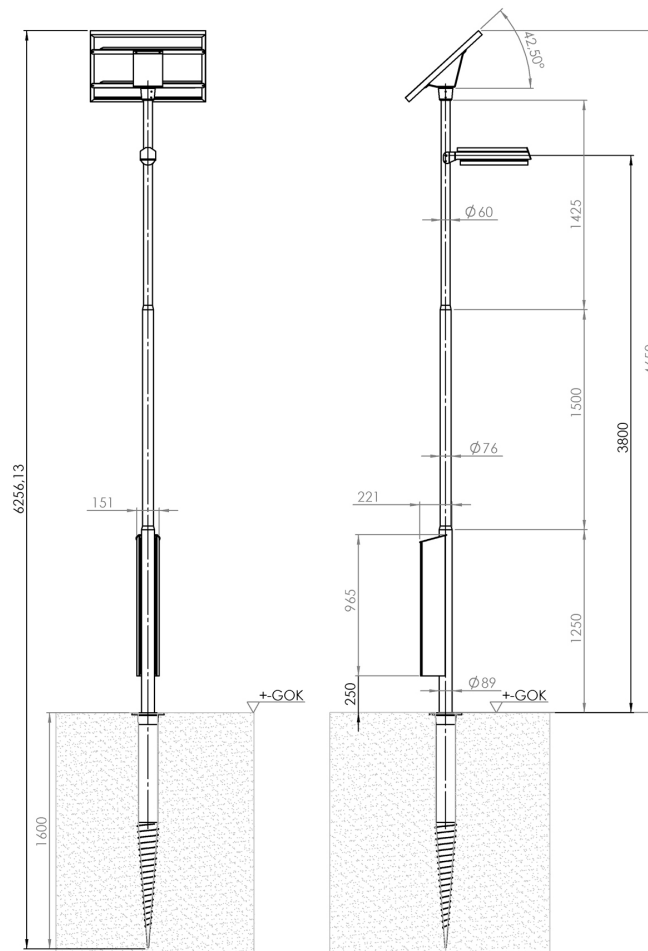
Recommended battery replacement	after 4 years
Recommended LED replacement	after 12 years
Guarantee	2 years (incl. battery)
Guarantee (the guarantee running time gets on as of production date)	2 years with 100% product guarantee 5 years guarantee for 90% minimum performance 10 years guarantee for 80% minimum performance

Possibilities of installation in soil

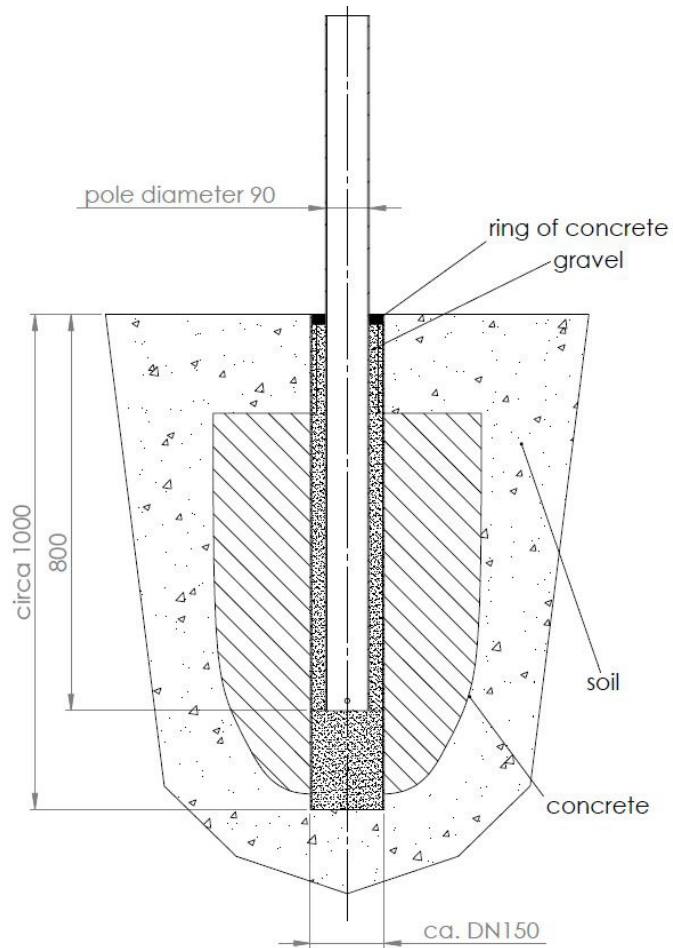
Pipe base KRINNER ground screw	KSF FEL 140x1600
-----------------------------------	------------------

(leaving technical changes)

Measurements:

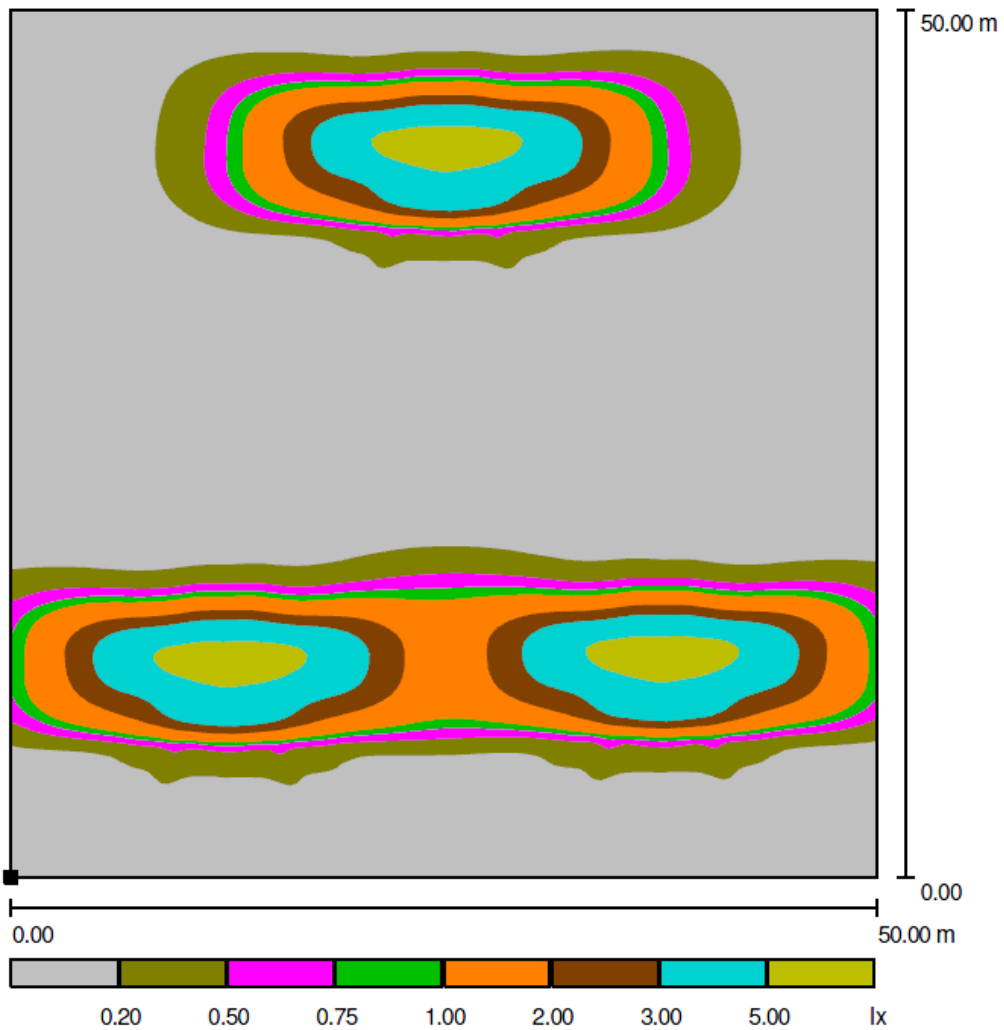


Sketch pipe foundation:



DIALUX Light intensity distribution curve (LID)

Single- and double-view



Example: pole distance 25m